

Snow avalanche tracks mapping within Bâlea glacial valley (the Făgăraș Mountains) using semi-automated detection methods

Florina ARDELEAN^{1,*}, Marcel TÖRÖK-OANCE¹, Mircea VOICULESCU¹

¹ West University of Timișoara, Department of Geography, V. Pîrvan, No. 4, 300223

* Corresponding author, florina.ardelean@e-uvt.ro

Received on <20-09-2015>, reviewed on <5-11-2015>, accepted on <25-11-2015>

Abstract

Mapping of snow avalanche tracks based on topographic maps, aerophotos and field data to achieve inventories for the whole mountainous areas in Romania is an important step in snow avalanche risk assessment and other related geomorphic processes. This requires experience and it is a time consuming process. In the absence of field data, the process of snow avalanche tracks mapping is influenced by the subjectivity of those who digitize.

Thus, we propose a semi-automated method for detection of snow avalanche tracks based mainly on geomorphometric parameters that can be extracted from the Digital Elevation Model (DEM) like slope gradient, plan and profile curvature, mean curvature, runoff.

In this study we used an object based analysis to detect snow avalanche tracks in central part of the Făgăraș Mts. This approach has two steps, segmentation and classification. First, we segmented the area based on plan curvature (which is the most important parameter that describes these snow avalanche tracks) in order to obtain objects. In the process of classification we added other conditions such as fuzzy function for slope gradient, thresholds for altitude and runoff and a shape index of objects. The results obtained were very close to the mapped tracks using digitizing techniques. The maps resulted from the classification were compared to the those resulted from digitizing in both number of objects and spatial agreement of the class of objects. There was a very good fit in case of the number of objects and total area of objects. The method could be improved if we apply on high resolution DEMs and also on more case studies with different topography and existing vector database.

Keywords: *snow avalanche tracks, geomorphometric parameters segmentation, object based classification, the Făgăraș Mountains*

Rezumat. Cartarea culoarelor de avalanșă în valea glacială Bâlea (Munții Făgăraș) folosind metode de detectare semi-automată

Cartarea culoarelor de avalanșă pe baza planurilor topografice, a aerofotogramelor și a datelor din teren pentru realizarea unei baze de date digitale în arealele montane din România este un pas important în evaluarea riscului la avalanșe și a altor procese geomorfologice conexe. Acest proces necesită experiență și foarte mult timp. În cazul absenței datelor din teren obținute cu GPS sau stație topografică, digitizarea este influențată de subiectivitatea celui care o realizează.

Studiul de față propune o metodă semi-automată de detectare a culoarelor de avalanșă pe baza integrării caracteristicilor geomorfometrice extrase din modele ale suprafeței topografice. Astfel, aceste caracteristici pot fi extrase din modelul altitudinilor, pantei, curbării. Pentru studiul de față s-a utilizat analiza orientată-obiect-obiect pentru a detecta culoarele de avalanșă în partea centrală a Munților Făgăraș. Această abordare are două etape, una de segmentare pentru obținerea obiectelor și una de clasificare a acestora. Segmentarea s-a realizat pe baza modelului curbării în plan, acesta fiind cel mai important parametru în detectarea culoarelor de avalanșă. Pentru clasificarea obiectelor rezultate s-au mai utilizat și valori caracteristice de pantă utilizând funcții fuzzy, valori prag pentru altitudine, concentrarea scurgerii apei și un indice pentru forma obiectelor. Culoarele de avalanșă obținute ca rezultat al clasificării au fost exportate vectorial și comparate cu datele existente realizate prin digitizare, obținându-se o potrivire foarte bună a obiectelor vectoriale atât în ceea ce privește numărul culoarelor cât și suprafața totală. Metoda poate fi îmbunătățită prin utilizarea unor modele digitale de înaltă rezoluție spațială și aplicarea pe mai multe areale test cu alte caracteristici topografice, și pentru care există baze de date vectoriale cu culoarele de avalanșă.

Cuvinte-cheie: *culoare de avalanșă, parametri geomorfometrici, segmentare, clasificare pe bază de obiecte, Munții Făgăraș*

Introduction

Snow avalanches are one of the most important natural hazards that act mainly in the high mountain environment. Within the Carpathians Mountains, these geomorphologic processes have an important impact on the natural environment and annually cause injuries and fatalities (Voiculescu, et.al., 2011).

Avalanche activity generates a distinctive morphologic shape on preexisting negative torrential features and also a biogeographic response that is associated to a characteristic land cover pattern (Walsh et.al. 1990), especially in forested areas, but also in alpine and subalpine domains. These areas are commonly named avalanche tracks, that develop

through a recurrent avalanche activity that manifest in the same area on mountain slopes.

Bedrock characteristics, terrain morphology and climate are considered important control factors in the spatial distribution of areas that are favourable to avalanche occurrence (Butler & Walsh, 1990; Thorn, 1978).

Snow avalanche activity is commonly associated with these patterns, thus the existence of mapped avalanche tracks is important in avalanche hazard and risk assessment.

The use of Digital Elevation Models (DEMs) and other remotely sensed data in mountainous areas for landforms detection and analysis is a common approach in Earth sciences. The extraction of land-

surface models from DEMs, like slope gradient, plan curvature, profile curvature, mean curvature, became an important condition for an objective analysis of landforms and geomorphic risk processes at various scales.

Semi-automated methods that use object based analysis for the detection and classification of topography increased lately with the development of the technologies that provide high resolution DEMs and imagery (i.e. Anders, Seijmonsbergen, & Bouten, 2009; Drăguț & Blaschke, 2006; Drăguț & Eisank, 2012; Schnevoigt et.al. 2008; Seijmonsbergen, Hengl, & Anders, 2011).

In Romania, semi-automated methods using semantic models and object-based approach have been used for the detection of glacial cirques and planation surfaces within the Southern Carpathians (i.e. Ardelean et.al, 2011; Török-Oance, Ardelean, & Onaca, 2009).

The methods that use objects are preferred to those using pixel, as they integrate GIS and remote sensing by representing the reality in a way that is closer to the human perception, meaning discrete objects and not pixels (Blaschke & Strobl, 2001).

Beyond the above mentioned approach, the advantages of this method refer to topological relations and the shape of the elements of interest, which can be integrated in the analysis (Blaschke, Lang, & Hay, 2008; Blaschke & Strobl, 2001).

Similar studies yielded maps of snow avalanche chutes in the Canadian Rockies (Barlow & Franklin, 2008) using image segmentation based on geomorphic and spectral characteristics, showing that the method has great potential to map large areas in very short time as compared to field mapping.

The aim of this study is to present a semi-automated method for the delineation of snow avalanche tracks using object based terrain analysis and semantic models implemented in a rule based classification approach in eCognition® software that can be used as a first step in mapping these features for large mountain areas that are frequently affected by snow avalanche processes.

Some mountain regions present difficult terrain regarding classical methods of mapping and require a lot of time to generate geomorphologic maps (Ardelean et.al., 2013). This method provides a solution to this shortcoming, by shortening the time for mapping and offers a more objective perspective because it includes quantifiable parameters like those derived from DEMs.

Study area

The Făgăraș Mountains are the most massive and highest in the Romanian Carpathians, with several peaks above 2500 m and landscape dominated by glacial and periglacial relief (Urdea,

2000). Our study focuses on the central part of the main ridge in the Transfăgărașan road area and its surroundings, mainly on the alpine domain of the Arpaș, Bălea, Doamna valleys. The study area is a glaciated one with a large glacial cirque in the upper part and a glacial valley downslope.

The Transfăgărașan road is located in the central part of the study area on the northern slope of Bălea glacial valley, this area being representative regarding the presence of snow avalanche tracks developed on steep slope on both sides of the valley (fig. 1). The elevation ranges between 1170-2507m, the highest peaks in the area being Buteanu (2507 m), Capra (2494 m) and Iezerul Caprei (2417 m). The slope gradient values on both side of the glacial valley are high (20-60 degrees), this causing important geomorphic processes like snow avalanches.

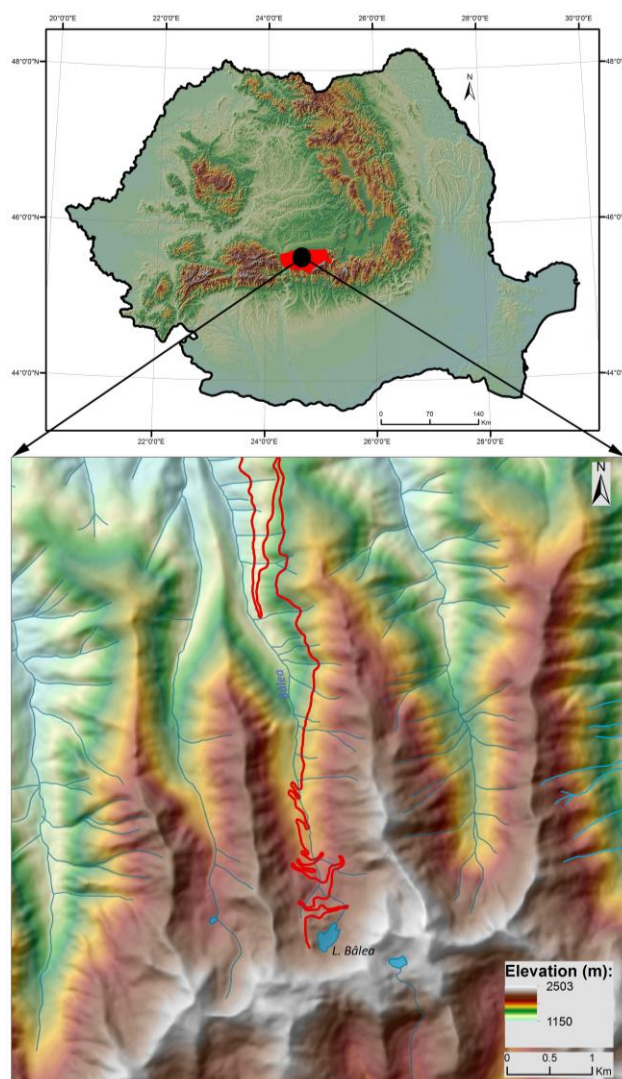


Fig. 1: Location of study area (central part of Făgăraș Mountains, main ridge and northern valleys near Transfăgărașan highway)

Snow avalanche processes are connected with the existence of snow avalanche paths, located mainly in the glacial valley sector and less in the cirque area.

The avalanche paths have mainly concave features, their distribution being controlled by tree cover and slope. Their starting zone is located above the tree-line and slope gradient between 25-50 degrees (Luckman, 1977).

The reason for choosing this area as a test site is related to the existence of a database with mapped snow avalanche tracks that can be used for validation: this area is also frequently affected by snow avalanche processes (Voiculescu, 2004; Voiculescu et al., 2011).

In the same time, the Transfăgărășan road and surrounding area is characterized by intense snow avalanche processes that annually affect the infrastructure and cause injuries and fatalities (Voiculescu et al., 2011).

Data and Methods

In this study we used a 12 m resolution DEM derived from topographic maps scale 1:25000.

The interpolation of altitude point values for generation of the DEM, preprocessing and filtering (5x5 moving windows) of the model were achieved in ArcGIS® and Landserf©.

The DEM model was further used to derive several land surface parameters – slope gradient, slope aspect, mean curvature, plan curvature, profile curvature and runoff, important parameters for snow avalanche tracks morphology and morphometry.

The statistic analysis of the values in slope gradient and curvature models showed long-tailed distributions, thus they were normalized using a transformation tool available for ArcGIS® that minimizes the skewness of slope gradient frequency distributions, and modifies the kurtosis of profile and plan curvature distributions towards that of the Gaussian (normal) model (Csillik, Evans, & Drăguț, 2015).

For the area used as test site, a vector database with digitized snow avalanche tracks in polygon format (fig. 2) was used for the extraction of geomorphometric parameters and for validation purpose.

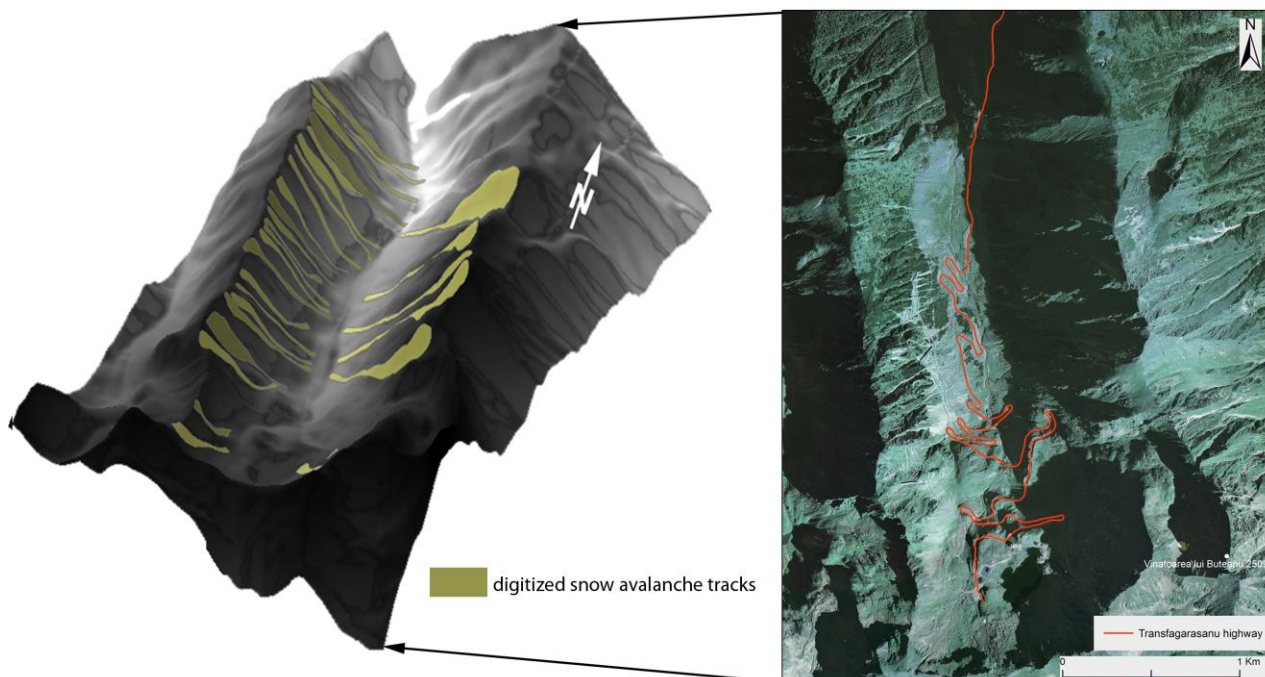


Fig. 2: Mapped snow avalanche tracks in polygon format overlapped on a hillshade model within Bâlea glacial valley

For all mapped avalanche tracks, mean, minimum and maximum value of the morphometric parameters were calculated (altitude, slope gradient, mean curvature, plan and profile curvature). For the detection of the snow avalanche tracks/paths we used a semantic model of these features based on the characteristics mentioned in literature (Luckman, 1977). This model is a link between these discrete elements in the field and their integration in computer software (Bishr, 1998; Dehn, Gärtner & Dikau, 2001) and objectively define the feature of interest.

Using these characteristics and the database with digitized polygons of the snow avalanche tracks from the Arpaș and Doamna valleys, we extracted the information derived from the DEM (altitude, slope gradient, plan curvature and the shape of the polygons). These were integrated in the classification algorithm, i.e. threshold for negative plan curvatures, high slope gradient values using fuzzy function, elongated shapes, starting zone above the timberline.

The object based analysis approach is based on two steps: a segmentation process at the beginning,

followed by a classification of the objects, based on the semantic model presented above.

Segmentation is a process of dividing an image in areas or objects that are homogeneous considering the spatial and spectral characteristics (Ryherd & Woodcock, 1996). It is a regionalization method, meaning a delineation of areas as a function of homogeneity and spatial contingency (Lang & Blaschke, 2006).

In an object based approach, the whole study area is divided in different size objects using segmentation, objects that are adjacent as a spatial distribution (Blaschke, 2010) and homogeneous function of one or more properties such as spectral value or size, shape, texture, context etc. (Baatz & Schäpe, 2000). The most common method is the multiresolution segmentation, that is an optimization procedure which, for a given number of image objects, minimizes the average heterogeneity and maximizes their respective homogeneity (Baatz & Schäpe, 2000).

The upscaling from pixel level to object or spatial primitives level was realized in eCognition8.7®, a step that requires specification of the segmentation scale, that is a non-dimensional parameters, small values of this parameters return small objects with high homogeneity and large scale values give larger objects, more heterogeneous (Baatz & Schäpe, 2000).

To avoid the trial and error process of selecting appropriate scales in image segmentation, we used the ESP tool (Estimation of Scale Parameters) free available for eCognition® (Drăguț, Tiede & Levick, 2010). This tool allows a more objective segmentation of the layers based on the local variance, a value that indicates the local variability within an image, so in a graph representation of the local variance, the breaks will indicate the optimal scale for segmentation, actually defining the objects that are very similar in the image and probably belonging to the same class in reality (Drăguț, Tiede & Levick, 2010).

The most important layer used in image segmentation was plan curvature, this being the parameter that best describes the morphology of snow avalanche tracks and we obtained several characteristic segmentation scales based on plan curvature: 5, 16, 23, 34, 53, 62. The value of 5 was selected for the segmentation of snow paths detection and we will further focus the classification process on this particular scale.

After segmentation and generation of objects, we developed the rule set for the classification step. Because of the similar values in plan curvature for small valley catchments and snow avalanche tracks (they have similar morphology in terms of plan curvature) we identified in the beginning the class "valley" using only negative plan curvature values - in this case, a threshold of -0.2, which identifies

concave entities in plan curvature. The class "snow avalanche tracks" was based on the existing "valley" class, then new conditions regarding slope gradient values were added, in this case a fuzzy membership was used with an interval of 25 - 50 degrees that best reflects the morphology of this class. Another condition, using different values for the runoff model, by trial and error process, a threshold was established to exclude those objects with high runoff values, which are considered temporary valleys.

Objects classified as potential snow avalanche tracks were merged and the resulted objects were further refined according to conditions regarding their geometry (shape and area). The snow avalanche tracks have elongated shapes and we used the shape index implemented in eCognition® with a threshold value less than 1.27 to identify only the objects with elongated shapes similar to a snow avalanche track geometry.

The resulted class of objects was exported for further comparisons with the existing snow avalanche paths database. The analysis process mentioned above can be synthesized in a schema that shows the workflow (fig. 3).

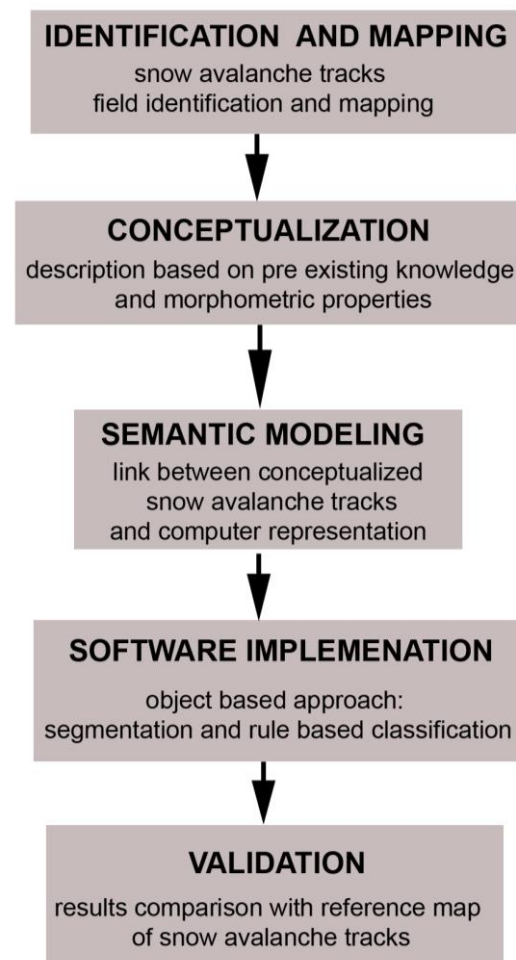


Fig. 3: Workflow scheme of the classification of snow avalanche tracks

Results and Discussions

The results achieved using the semantic model of avalanche tracks and classification algorithm in an object based environment were exported as vector files in the existing database in ArcGIS® for comparative analysis and visualization.

Vectorized layers with snow avalanche tracks generated from aerial photos scale 1:5000 were used as reference information for the comparison of the results and both vector layers (digitized one and exported one from eCognition®) were overlaid over the hillshade model. Further selections based on the intersection of the two mentioned layers were applied.

The method was first tested on an area that covers the Arpaș Valley and its surroundings and the results showed a similarity of 86% with the reference map of the digitized avalanche tracks.

For validation, we used the area that covers the Bâlea glacial valley and its surroundings. In this site, 30 snow avalanche tracks were digitized from various sources, located mainly in the alpine domain of the valley. Using the classification algorithm, 32 objects were obtained (fig. 4).

Only comparing the number, we can observe that the results are close to field reality (32 compared to 30), although the objects have different extent and spatial agreement. There were 4 objects identified in the forest domain, but for the forested areas a higher accuracy DEM is needed.

Regarding the spatial concordance of the generated objects with the digitized ones, we used area concordance (Borghuis, Chung, & Lee, 2007), a parameter that expresses the spatial coincidence of areas (objects) generated using different methods of mapping. This parameter generates percentages that are a measure of the agreement between the two analyzed maps. In the case of the Bâlea glacial valley, the agreement between the two methods was of 69%.

Although the results are similar in the number of features in the alpine level of the valley, there still are differences in the agreement of spatial extent of individual feature. Since the mapping scale of the two types of objects was different (i.e. the digitized polygons were realized at 1:5000 while the classified objects were generated from models at 1:25000), we can assume that this can be considered as an important factor in the resulted differences. The individual objects generated in classification are in general smaller than the objects in the reference layer and do not cover the entire runout zone of the avalanche path; they only reflect the morphology of a typical snow track with high negative values in plan curvature and a better spatial agreement in the upper part of the path, where the concavity is more evident.

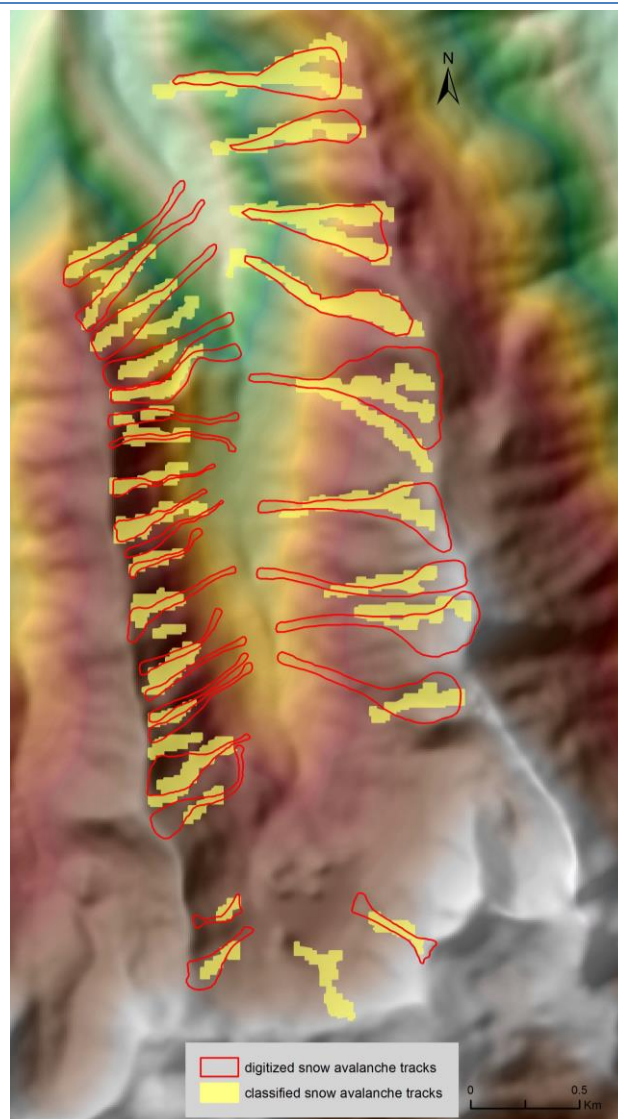


Fig. 4: Mapped comparison of the resulted objects generated by classification with the digitized snow avalanche tracks within Bâlea glacial valley

Conclusions

This study presents the preliminary results of the application of a semi-automated method for the detection of snow avalanche tracks based on DEM derived parameters within the central part of the Făgăraș Mountains. The comparison of these results with mapped avalanche tracks by digitizing techniques showed that this approach has a good potential and can be used as a first step in mapping large rough terrain areas, hardly accessible to be mapped in the field.

We still need to extend and test the algorithm and validation of the method on more detailed resolution data that have more or less the same scale with the reference data. The method can be improved if we use a high resolution DEM and also more case studies with existing vector database of snow avalanche tracks and different characteristics of topography.

Acknowledgements

This work has been supported by the the strategic grant POSDRU/159/1.5/S/133391, Project "Doctoral and Post-doctoral programs of excellence for highly qualified human resources training for research in the field of Life sciences, Environment and Earth Science" co-financed by the European Social Fund within the Sectorial Operational Program Human Resources Development 2007 – 2013".

References

- Anders, N., Seijmonsbergen, A., & Bouten, W. (2009, 31 August - 02 September). Multi-scale and object-oriented image analysis of high-res LiDAR data for geomorphological mapping in Alpine mountains. Paper presented at the *Proceedings Geomorphometry 2009*, Zurich
- Ardelean, F., Drăguț, L., Urdea, P., & Török-Oance, M. (2013). Variations in landform definition: a quantitative assessment of differences between five maps of glacial cirques in the Țarcu Mountains (Southern Carpathians, Romania). *Area*, 45(3), 348-357
- Ardelean, F., Török-Oance, M., Urdea, P., & Onaca, A. (2011). Application of object based image analysis for glacial cirques detection. Case study: the arcu Mountains (Southern Carpathians). *Forum geografic.*, 10(1), 20-26
- Baatz, M., & Schäpe, A. (2000). Multiresolution Segmentation-an optimization approach for high quality multi-scale image segmentation. In J. Strobl, T. Blaschke & G. Griesebner (Eds.), *Angewandte Geographische Informationsverarbeitung* (Vol. 12, pp. 12-23). Heidelberg: Wichmann-Verlag
- Barlow, J., & Franklin, S. (2008). Mapping snow avalanche chutes in the Canadian Rockies using Landsat TM and DEM data. *Canadian Journal of Remote Sensing*, 34(6), 516-525
- Bishr, Y. (1998). Overcoming the semantic and other barriers to GIS interoperability. *International Journal of Geographical Information Science*, 12(4), 299-314
- Blaschke, T. (2010). Object based image analysis for remote sensing. *Isprs Journal of Photogrammetry and Remote Sensing*, 65(1), 2-16. doi: DOI: 10.1016/j.isprsjprs.2009.06.004
- Blaschke, T., Lang, S., & Hay, G. J. (2008). Object-Based Image Analysis. Spatial Concepts for Knowledge-Driven Remote Sensing Applications. Heidelberg, Berlin: Springer
- Blaschke, T., & Strobl, J. (2001). What's wrong with pixels? Some recent developments interfacing remote sensing and GIS. *GeoBIT/GIS*, 6, 12-17
- Borghuis, A. M., Chung, K., & Lee, H. Y. (2007). Comparison between automated and manual mapping of typhoon-triggered landslides from SPOT-5 imagery. *International Journal of Remote Sensing*, 28(8), 1843-1856
- Butler, D. R., & Walsh, S. J. (1990). Lithologic, Structural, and Topographic Influences on Snow Avalanche Path Location, Eastern Glacier National Park, Montana. *Annals of the Association of American Geographers*, 80(3), 362-378
- Csillik, O., Evans, I. S., & Drăguț, L. (2015). Transformation (normalization) of slope gradient and surface curvatures, automated for statistical analyses from DEMs. *Geomorphology*, 232, 65-77. doi: http://dx.doi.org/10.1016/j.geomorph.2014.12.038
- Dehn, M., Gärtner, H., & Dikau, R. (2001). Principles of semantic modeling of landform structures. *Computers & Geosciences*, 27(8), 1005-1010
- Drăguț, L., & Blaschke, T. (2006). Automated classification of landform elements using object-based image analysis. *Geomorphology*, 81(3-4), 330-344
- Drăguț, L., & Eisank, C. (2012). Automated object-based classification of topography from SRTM data. *Geomorphology*, 141-142(0), 21-33. doi: 10.1016/j.geomorph.2011.12.001
- Drăguț, L., Tiede, D., & Levick, S. (2010). ESP: a tool to estimate scale parameters for multiresolution image segmentation of remotely sensed data. *International Journal of Geographical Information Science*, 24(6), 859-871. doi: doi:10.1080/13658810903174803
- Lang, S., & Blaschke, T. (2006). Bridging remote sensing and GIS - What are the main supportive pillars? Paper presented at the *OBIA 2006*, Salzburg, Austria
- Luckman, B. H. (1977). The geomorphic activity of snow avalanches. *Geografiska Annaler Series a-Physical Geography*, 59 A(1-2), 31-48
- Ryherd, S., & Woodcock, C. (1996). Combining spectral and texture data in the segmentation of remotely sensed images. *Photogrammetric Engineering and Remote Sensing*, 62(2), 181-194
- Schneevoigt, N. J., van der Linden, S., Thamm, H.-P., & Schrott, L. (2008). Detecting Alpine landforms from remotely sensed imagery. A pilot study in the Bavarian Alps. *Geomorphology*, 93(1-2), 104-119
- Seijmonsbergen, A. C., Hengl, T., & Anders, N. S. (2011). Semi-automated identification and extraction of geomorphological features using digital elevation data. In M. J. Smith, P. Paron & J. Griffiths (Eds.), *Geomorphological Mapping: a professional handbook of techniques and applications* (pp. 254-295). Amsterdam: Elsevier
- Thorn, C. E. (1978). The Geomorphic Role of Snow. *Annals of the Association of American Geographers*, 68(3), 414-425. doi: 10.2307/2561979
- Török-Oance, M., Ardelean, F., & Onaca, A. (2009). The Semiautomated Identification of the Planation Surfaces on the Basis of the Digital Terrain Model. Case Study: the Mehedinți Mountains (Southern Carpathians). *Forum geografic, Geographical and Environmental protection Studies and Research*, 8, 5-13
- Urdea, P. (2000). The geomorphological risk in Transfăgărașanu highway. *Studia Geomorphologica Carpatho-Balcanica*, XXXIV, 115-123
- Voiculescu, M. (2004). About the morphometrical characteristics of avalanche tracks on Bălea-Capra Area (Fagaras Massif). *Analele Universitatii de Vest din Timisoara, Seria Geografie*, XIV, 31-43
- Voiculescu, M., Ardelean, F., Onaca, A., & Török-Oance, M. (2011). Analysis of snow avalanche potential in Bălea glacial area - Făgăraș massif, (Southern Carpathians - Romanian Carpathians). *Zeitschrift für Geomorphologie*, 55(3), 291-316
- Walsh, S. J., Butler, D. R., Brown, D. G., & Bian, L. (1990). Cartographic modeling of snow avalanche path location within Glacier National Park, Montana. *Photogrammetric Engineering & Remote Sensing*, 56(5), 615-621